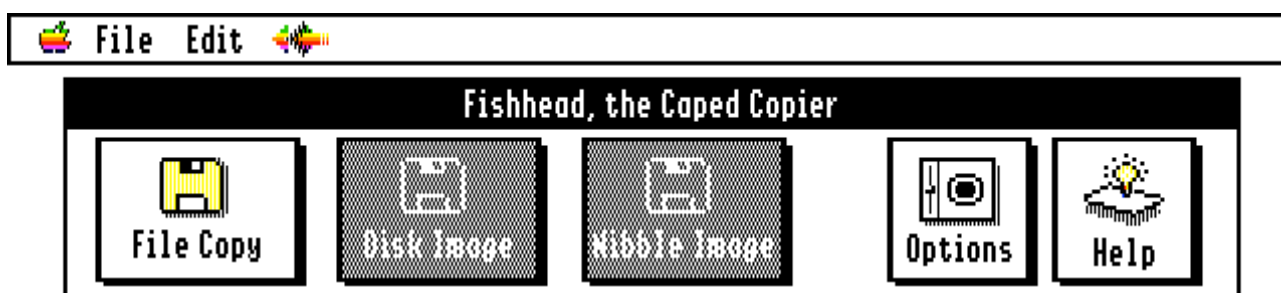


# Fishhead

## *The Caped Copier*

by Antoine Vignau and Olivier Zardini



**BRUTAL DELUXE**  
PROGRAMMING

Copyright 2011  
<http://www.brutaldeluxe.fr/>

version 1 - Hello Tony!

# Contents

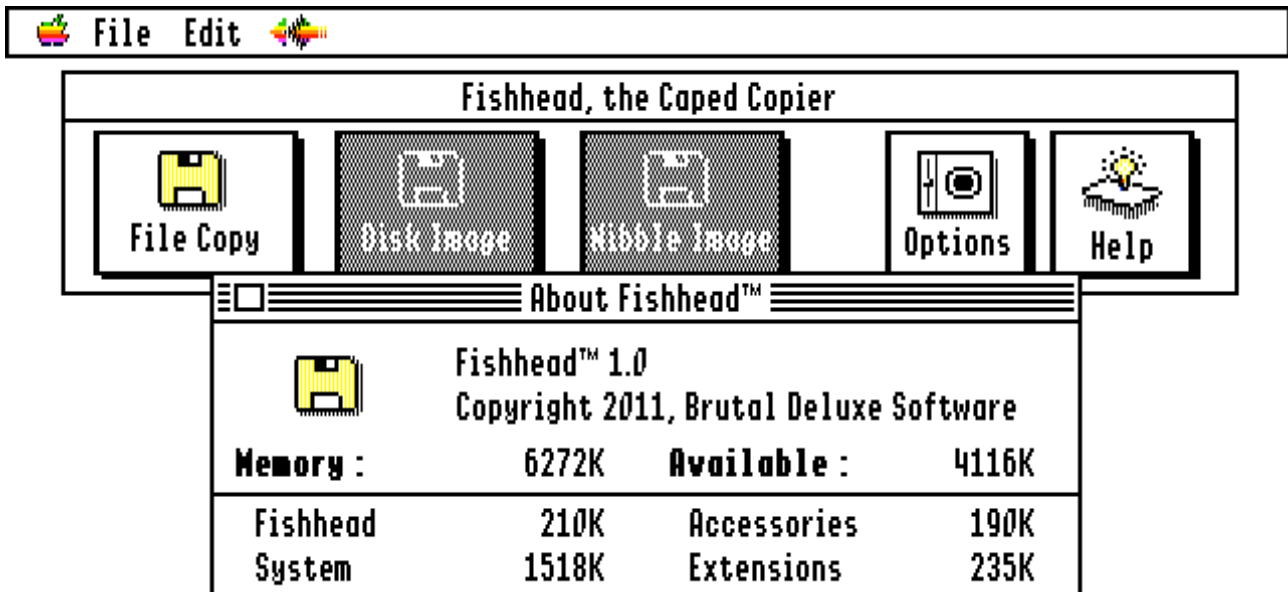
---

<b>About Fishhead, the Caped Copier</b>	<b>3</b>
<b>The interface</b>	<b>4</b>
<b>File copy</b>	<b>5</b>
<b>Disk image</b>	<b>8</b>
<b>Nibble image</b>	<b>9</b>
<b>Options</b>	<b>10</b>
<b>Help</b>	<b>11</b>
<b>Questions &amp; Answers</b>	<b>12</b>
<b>How to contact us?</b>	<b>13</b>

# Chapter 1

## About Fishhead, the Caped Copier

Welcome to *Fishhead*, the Caped Copier. This manual will tell you what features are included in this version.



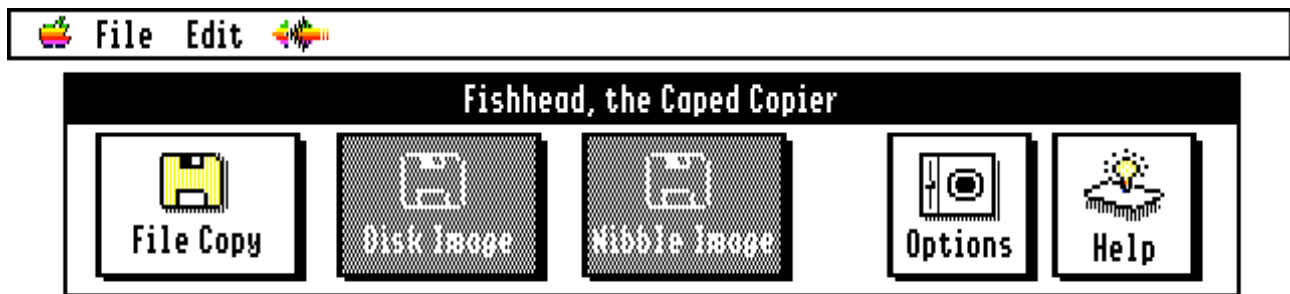
Fishhead is a GS/OS desktop file copier application. It offers several features which make it a powerful software for diskette and file preservation:

- Attributes preservation
  - All copied files keep their original date, time and other attributes (e.g. invisible or locked) information
- Batch mode
  - Removable devices can be ejected and Fishhead will wait for the next medium to be inserted before copying it, and so on
- Error handling
  - Fishhead does not stop on read errors, it copies as much data as possible
- History log
  - The program displays and saves a log file including the result for each copied file from the source disk

## Chapter 2

# The interface

---



Fishhead, the Caped Copier is a desktop-based GS/OS application written in pure assembly language.

The command window, shown above, contains the main features of the program: File Copy, Disk Image, Nibble Image, Options and Help. If one feature is dimmed, then it is not available.

Fishhead uses a standard menu bar in order to allow New Desk Accesories to work correctly.

# Chapter 3

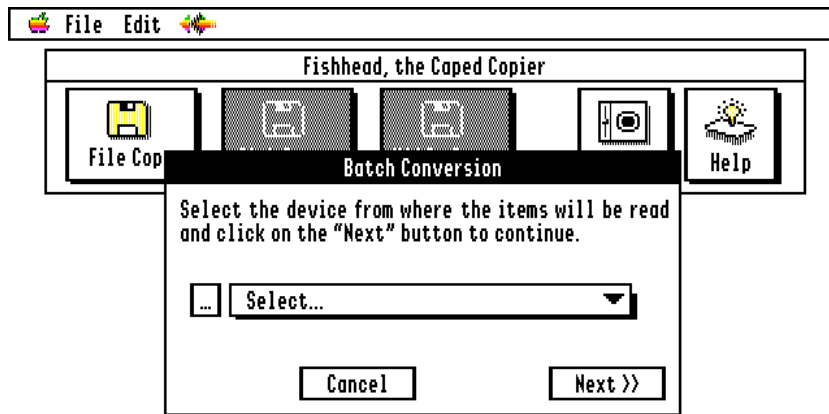
## File copy

---

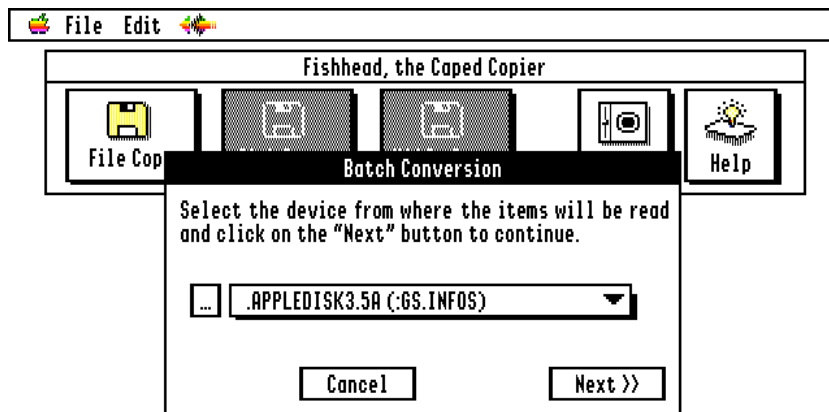
File Copy is the recursive file copy feature of Fishhead. It is as straightforward as:

- select a source device
- select a destination folder
- click “Start...”

### Step 1 - Select a source device

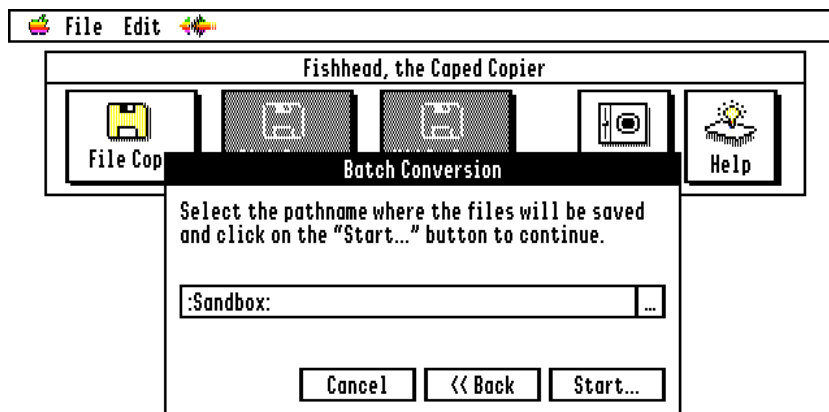


Click on the “File Copy” icon in the command window. Fishhead will build a list of the block devices available to you. Select one from the drop-down list and click the “Next >>” button.

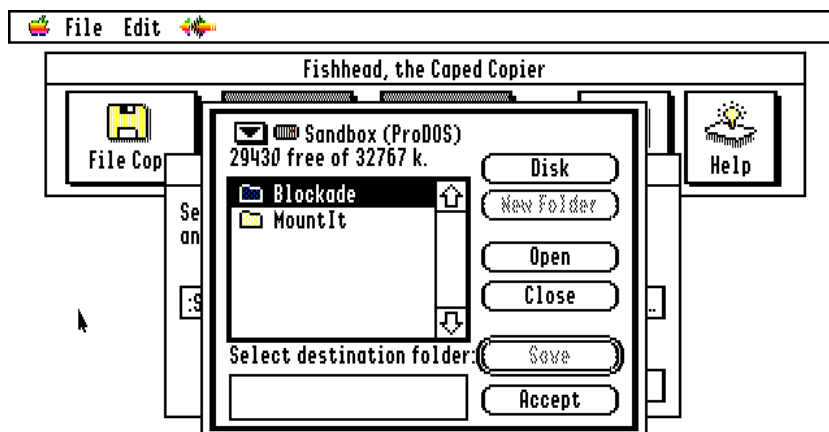


You can refresh the list of block devices by clicking on the “...” button, to the left of the drop-down menu.

## Step 2 - Select a destination folder



Enter the destination pathname in the line edit field. If you are more comfortable with the standard Apple user interface to select the destination folder, click on the “...” icon to the right of the line edit field.



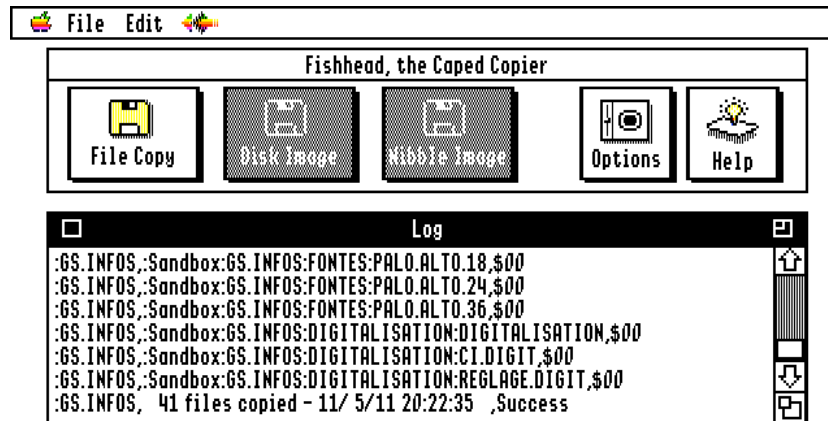
Select the destination folder and click on the “Accept” button. By default, the destination folder is the application one.

Entering a filename in the Standard File window does not serve any purposes.

You will be redirected to the first window of that page, the line edit field will be updated with your newly-selected destination folder.

Then, click the “Start...” button.

## Step 3 - Check the results



If the “Display log file” option is enabled in the Options window, a log window will be displayed and filled in with the results of each folder/file copy.

The generated log file is a comma-separated values text file which can be later opened with a modern spreadsheet program. Refer to the Q&A section for more information.

If “Batch mode” is enabled, the source medium is ejected and the program waits for the next disk to be inserted. Please note the following:

- If the source device is a 3”5 drive, Fishhead will automatically wait for the next disk to be inserted, or,
- If it is any other device, an alert window is displayed, asking you to eject and insert a new medium (e.g. a 5”25 diskette)
- In all cases, the boot device cannot be ejected!

# Chapter 4

## Disk image

---

The feature is not yet implemented.



# Chapter 5

## Nibble image

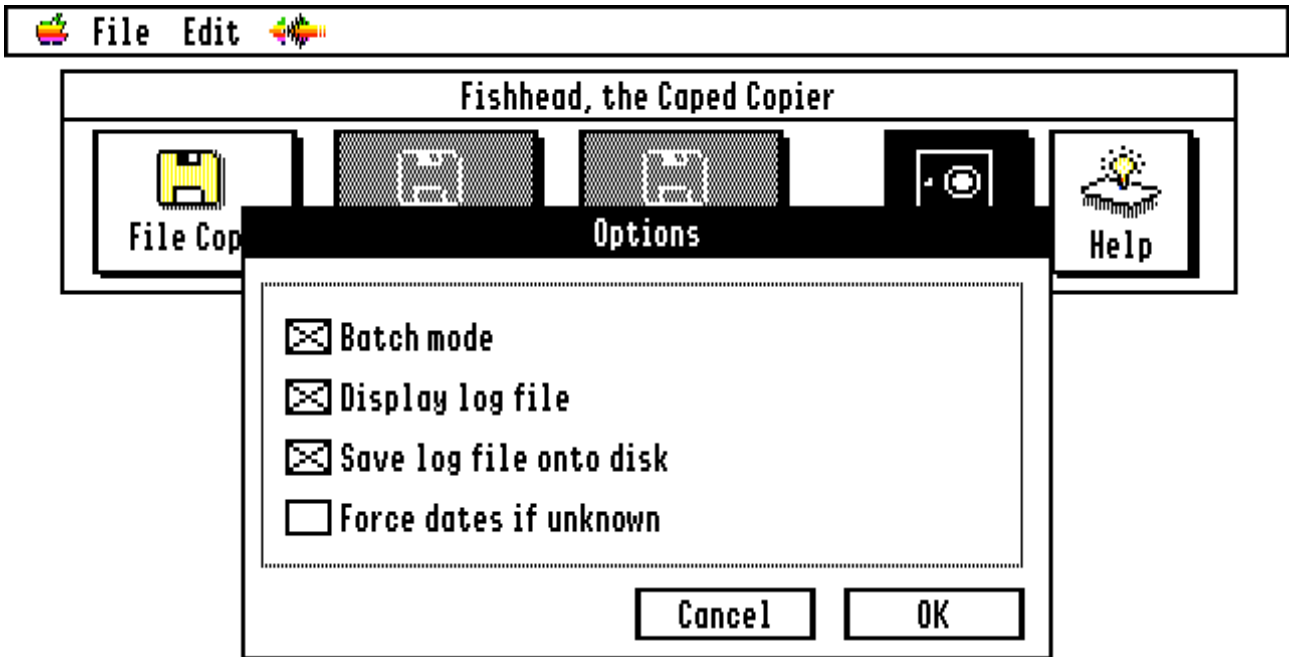
---

The feature is not yet implemented.

# Chapter 6

## Options

---



### Batch mode

If the option is enabled and if the source device manages removable devices, then Fishhead will eject the disk after a copy process and wait until a new disk is inserted. Doing so will start the copy process again. Nevertheless, you can cancel the process by pressing the escape key while Fishhead waits for the new disk to be inserted.

### Display log file

If the option is enabled, Fishhead will open a new window and display the log information for each folder or file copied.

### Save log file onto disk

If the option is enabled, a log file is saved onto disk. Please refer to the Q&A chapter for more information.

### Force dates if unknown

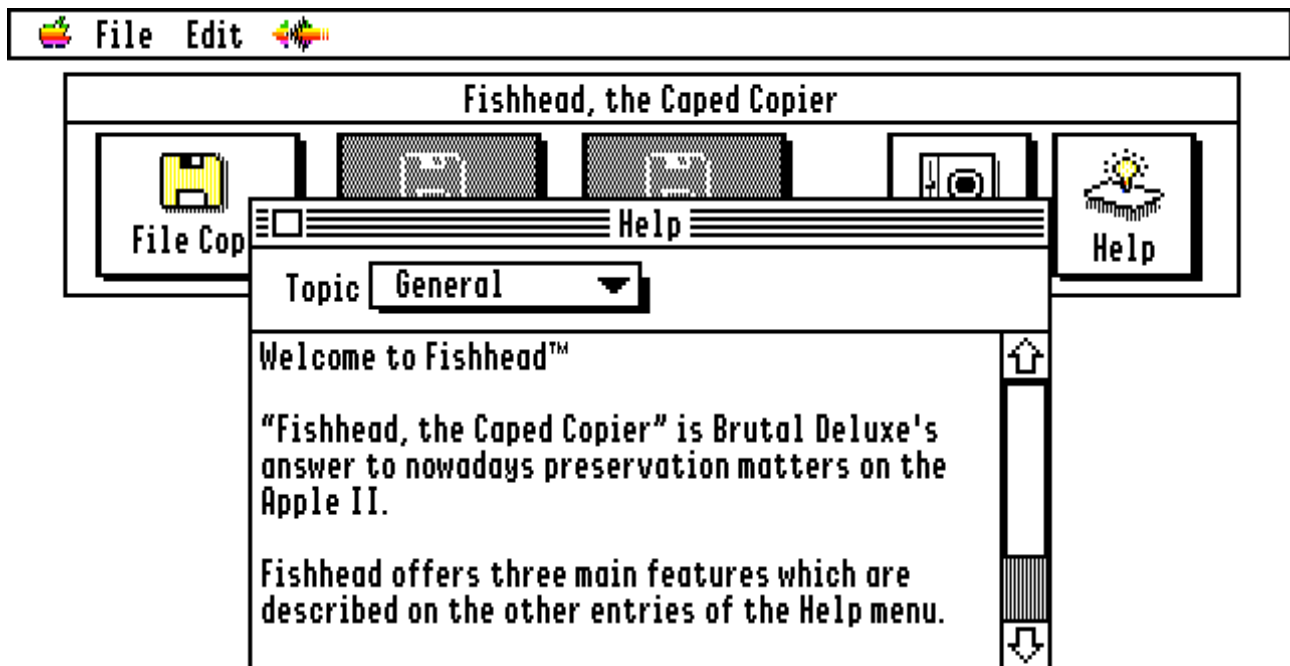
If the option is enabled, Fishhead will copy the creation or modification date and time value to the other field, if the other one is empty. It is a way to set a date if it is unknown.

If you click "OK", the options will be saved to disk in the Preferences folder of your startup disk. Similarly, when you start the program, the options will be loaded from the same folder. If none exists, Fishhead will generate a standard preferences file.

# Chapter 7

## Help

---



Isn't that self-explanatory?

Select an entry from the drop-down list and Fishhead will display a short related help message.

# Chapter 8

## Questions & Answers

---

### Are there any limitations?

Currently, there's one: source and destination devices can be the same. There is no comparison between the two paths and can lead to a weird behaviour of Fishhead. You have been warned!

On the destination volume, there can be no more than 100 folders of the same diskette. As previously written, Fishhead creates a folder on the destination volume of the same name of the source diskette. It suffixes it with two digits (from 00 to 99) if the folder already exists.

### Where is my log file?

If the "Save log file onto disk" is enabled, either a "volume name.log" or "Fishhead.log" log file is saved to disk in the same directory as the destination pathname depending whether the batch mode is turned off or on.

### Can I interrupt a copy process?

Yes, pressing the escape key during a copy will stop the program. If the log file option is enabled, the status line will display "Cancelled by User".

### Can Fishhead interrupt a copy process?

Yes, in case of destination volume write errors, Fishhead will stop itself. If the log file option is enabled, the status line will display "Cancelled by Fishhead".

### What is the format of the log file?

The log file is a comma-separated values text file. It is composed of three columns:

- 1st: source volume name
- 2nd: complete pathname and filename in the destination volume
- 3rd: GS/OS status code (\$00 means no error, any other value means an error was encountered while copying the file) - Refer to your ProDOS or GS/OS manuals to have a detailed message of the error code.

The first line contains the following information:

- 1st: source volume name
- 2nd: the date and time when the process was launched
- 3rd: an empty column

The last line, also composed of three columns, contains the following information:

- 1st: source volume name
- 2nd: number of files copied and the date and time of the end of the process
- 3rd: Fishhead status code
  - "Success": the process ended with no errors
  - "With concerns": the process ended but has encountered read errors
  - "Cancelled by User": the process was stopped by the User
  - "Cancelled by Fishhead": process was stopped by Fishhead

# Chapter 9

## How to contact us?

---



# BRUTAL DELUXE

## PROGRAMMING

Come and join us on the internet at <http://www.brutaldeluxe.fr/> or write to us at:

- [antoine@brutaldeluxe.fr](mailto:antoine@brutaldeluxe.fr)
- [olivier@brutaldeluxe.fr](mailto:olivier@brutaldeluxe.fr)

---

We would like to thank the following people for their help in debugging this software:

- Geoff Body
- Craig Bradley
- Josh Burker
- Rusty Dekema
- Tony Diaz
- David Finnigan
- Steven Hirsch
- Steven Nelson
- Adrian Whichello